

# Barceló Sevilla Renacimiento





## With its cutting-edge design

---

The **Barceló Sevilla Renacimiento\*\*\*\*\* Hotel** enjoys a location on the banks of the river Guadalquivir, close to the Alameda de Hércules, one of Seville's trendiest areas for leisure and dining. And it is just a few minutes from the city's major historical attractions.

The hotel offers:

- Spacious, light and airy guest rooms
- The finest Convention Centre in Seville, with seating for 1,200 people
- 28 Meeting rooms
- 10,000 m<sup>2</sup> of private gardens
- Outdoor swimming pool and sauna
- Semi-covered, temperature-controlled, swimming pool
- Car Park with 105 spaces
- Fitness room
- 2 Restaurants, a GastroBar and summer Barbecue in the gardens



**Barceló** Sevilla Renacimiento

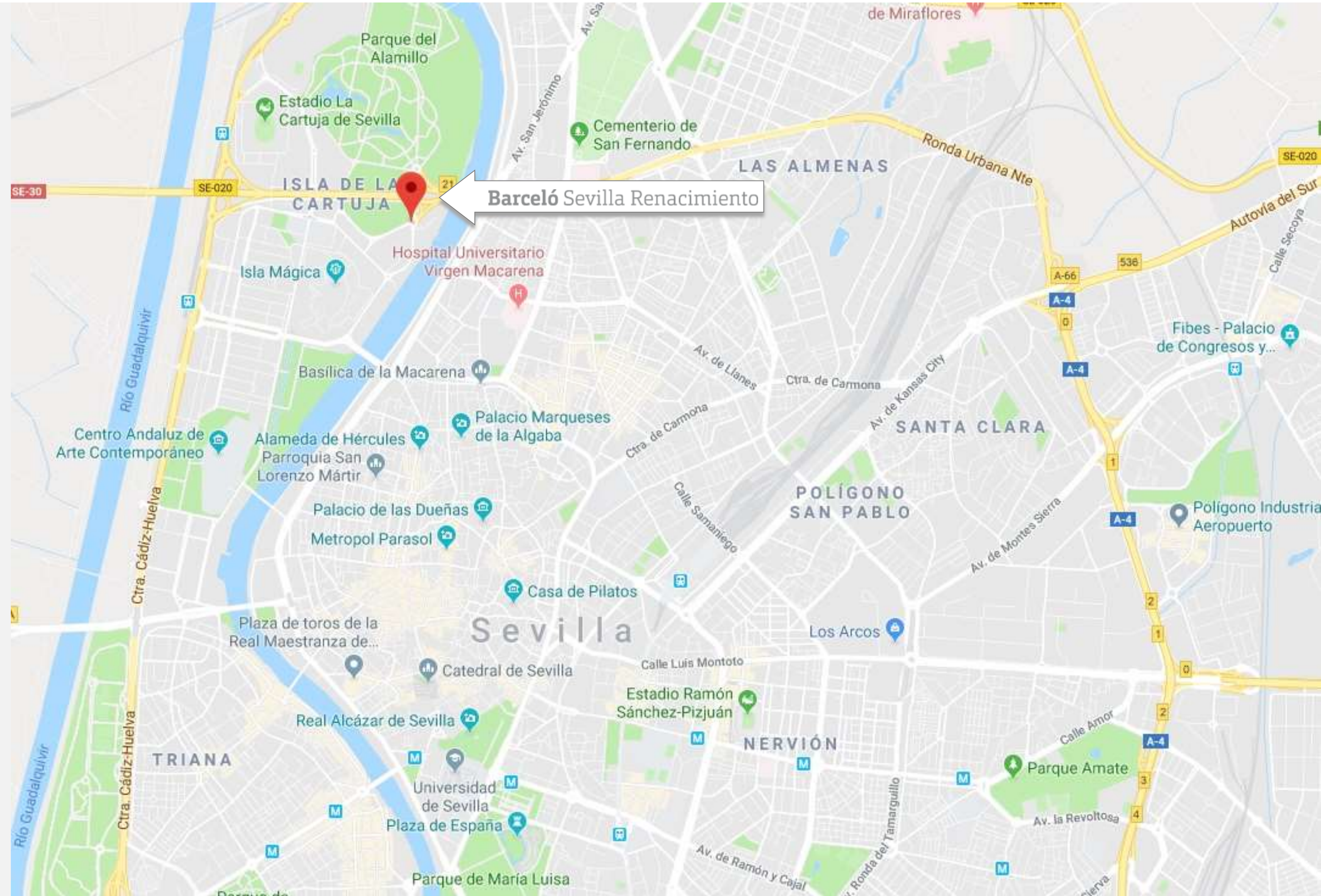
Live up to **more**



# Location

Located on the banks of the Guadalquivir, 10 minutes from the city's historic quarter.

- 500 m from the Isla Mágica Theme Park
- 1.5 km from La Cartuja Olympic Stadium
- 2 km from the city centre (Alameda de Hércules)
- 2.5 km from the AVE Station - Sevilla Santa Justa
- 4 km from the Convention and Exhibition Centre (FIBES)
- 12.2 km from Seville Airport



**Barceló** Sevilla Renacimiento

Live up to **more**



# Rooms

---

The Barceló Sevilla Renacimiento Hotel has 295 spacious, light and airy guest rooms, decorated in a modern, elegant style and fully equipped on every level.

The hotel offers the following room categories:

- Deluxe Standard
- Junior Suite
- Suite
- Presidential Suite



**Barceló** Sevilla Renacimiento

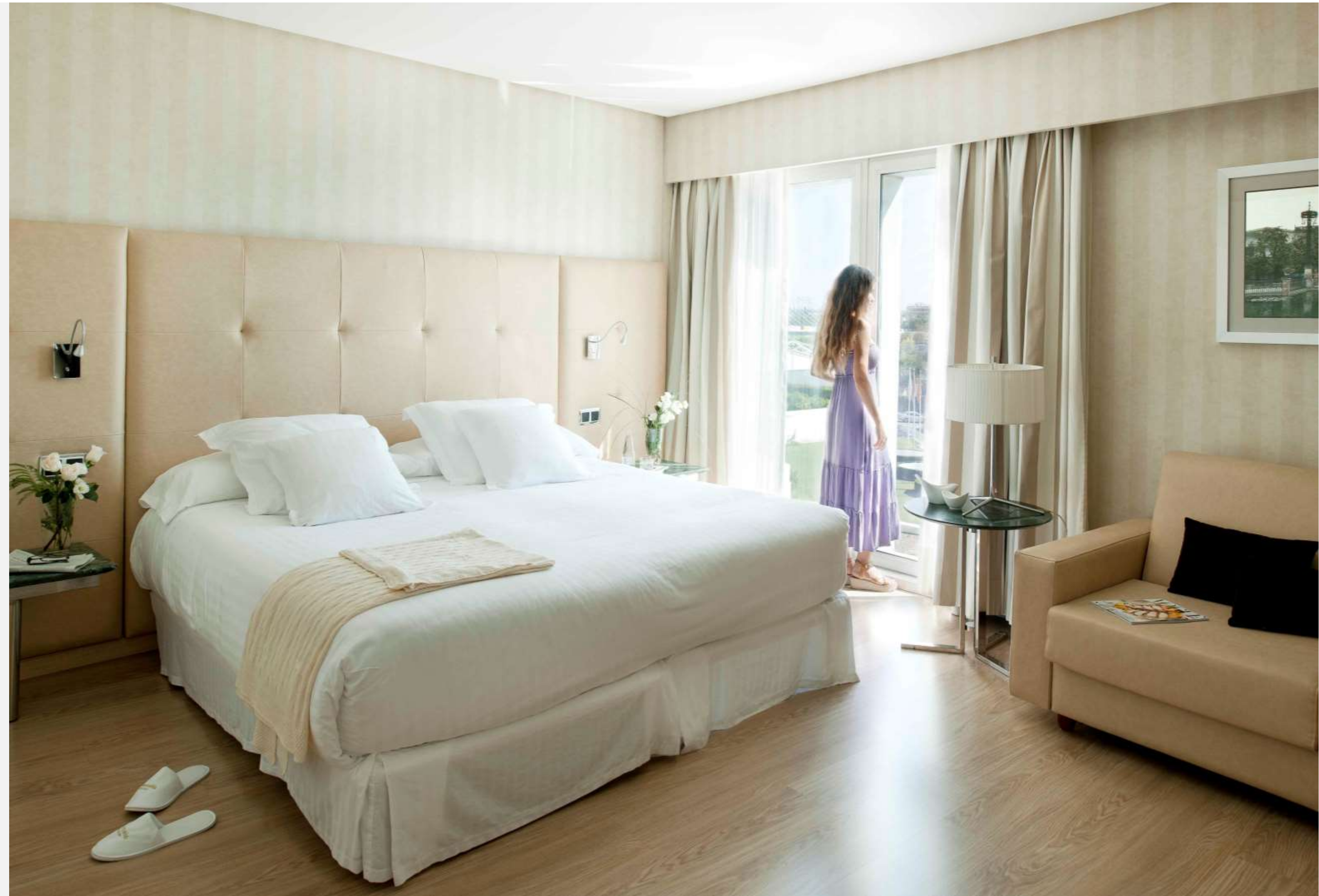
Live up to **more**



# Deluxe Standard

---

- 276 rooms
- Spacious, 40 m<sup>2</sup> rooms
- Accommodation for up to 3 people
- Two beds, each 105 cm
- One 70 cm sofa-bed
- Pillow menu
- Air conditioning
- Minibar (additional charge)
- Safe (no additional charge)
- Nespresso coffee machine
- 32" Satellite TV
- Telephone and free Wi-Fi Internet access
- 24-hour room service (at an extra charge)
- Laundry service (at an extra charge)
- Full bathroom with a bath and raindrop shower



**Barceló** Sevilla Renacimiento

Live up to **more**



# Junior Suite

---

- 12 rooms
- Spacious, 50 m<sup>2</sup> rooms
- Accommodation for 3 adults
- Two beds, each 105 cm
- One 70 cm / 140 cm sofa-bed
- Pillow menu
- Air conditioning
- Minibar (additional charge)
- Safe (no additional charge)
- Nespresso coffee machine
- Iron and ironing board
- 42" Satellite TV
- Telephone and free Wi-Fi Internet access
- 24-hour room service (at an extra charge)
- Laundry service (at an extra charge)
- Full bathroom with a bath and raindrop shower
- Dressing room (in some rooms only)



**Barceló** Sevilla Renacimiento

Live up to **more**



# Suite

- 6 rooms
- Spacious, 80 m<sup>2</sup> rooms
- Accommodation for 3 adults
- King size bed, 2.1 m
- One 140 cm sofa-bed
- Pillow menu
- Air conditioning
- Minibar (additional charge)
- Safe (no additional charge)
- Nespresso coffee machine
- Iron and ironing board
- Two 42" Satellite TVs
- Telephone and free Wi-Fi Internet access
- 24-hour room service (at an extra charge)
- Laundry service (at an extra charge)
- Full bathroom with a bath and raindrop shower
- 2 courtyards with solarium and jacuzzi
- Dressing room





# Presidential Suite

---

- 1 room
- Spacious, 120 m<sup>2</sup> room
- Accommodation for 3 adults
- King size bed, 2.1 m
- One 140 cm sofa-bed
- Pillow menu
- Adjacent meeting room, with a separate entrance
- Air conditioning
- Minibar (additional charge)
- Safe (no additional charge)
- Nespresso coffee machine
- Iron and ironing board)
- Two 42" Satellite TVs
- Telephone and free Wi-Fi Internet access
- 24-hour room service (at an extra charge)
- Laundry service (at an extra charge)
- Full bathroom with a bath and raindrop shower
- 3 Patios and a solarium with a jacuzzi
- Dressing room





# Events

---

## ATRIUM 1

Ideal for an incentive event or an exclusive function, thanks to its privacy and potential for personalisation. May be used as a plenary room, and affords direct access to the hotel gardens.

- 103 rooms (including 4 Junior Suites and 7 Suites)
- 420 m<sup>2</sup> room for use as a private dining room
- Seating for up to 300 people when laid out as a dining room, or 350 in a theatre layout
- Guarantees full privacy and confidentiality for events such as product launches
- A separate system is in place for dimming the cupola and closing the facility
- Height 20 m, with a technical ceiling



**Barceló** Sevilla Renacimiento

Live up to **more**



# Events

.....

## ATRIUM 1



Barceló Sevilla Renacimiento

Live up to **more**



# Gardens

---

- 10,000 m<sup>2</sup> of gardens
- Seating for up to 900 people when laid out to cater for gala dinners
- Ideal for holding unforgettable evening functions, coffee breaks, barbecues and gala dinners



**Barceló** Sevilla Renacimiento

Live up to **more**



# Events

---

## ATRIUM II

A harmonious space, mainly dedicated to catering services; the Jardín and Colón Restaurants are both located in this area.

- The Colón Buffet Restaurant for private breakfasts and dinners for up to 330 people
- The Jardín à la carte Restaurant
- La Santa María GastroBar
- Three 38 m<sup>2</sup> sub-committee rooms with natural lighting
- 96 rooms (including 4 Junior Suites)



**Barceló** Sevilla Renacimiento

Live up to **more**



# Events

---

## ATRIUM III

This is the atrium used for major events, thanks to its sub-committee rooms, central patio and proximity to the Convention Centre.

- 96 rooms (including 4 Junior Suites)
- 700 m<sup>2</sup> central courtyard
- Height 23 m, with a technical ceiling
- 20 sub-committee rooms (10 of which are accessible to vehicles)
- 700 m<sup>2</sup> central patio for use as a plenary area
- Fitness Room
- Direct access to the outdoor swimming pool and gardens
- Seating for 700 people for catering services
- Seating for 450 people for meetings with a theatre layout



**Barceló** Sevilla Renacimiento

Live up to **more**



# Events

.....

ATRIUM III



**Barceló** Sevilla Renacimiento



Live up to **more**



# Events

---

ATRIUM III:  
Sub-committee  
rooms



**Barceló** Sevilla Renacimiento

Live up to **more**



# Events

.....

## BARCELÓ CONVENTION CENTRE

With a total area of 1,024 m<sup>2</sup>, a height of between 6 and 7 metres, and the option of natural lighting, this hall can be divided into 3 separate rooms using completely soundproof panels.

Maximum capacity: 1,200 delegates

The Convention Centre is surrounded by the 843 m<sup>2</sup> gallery and Foyer, a 100% glazed area affording views of the River Guadalquivir, and therefore perfect as an area for presentations and/or dining.





# Events

BARCELÓ CONVENTION CENTRE



Barceló Sevilla Renacimiento

Live up to **more**



# Cuisine

---

The hotel has three restaurants and a gastrobar for less formal meals:

- **La Santa María GastroBar**
- The **Colón Buffet Restaurant** is the Hotel's breakfast room and is also used for lunches and private dinners for groups.
- The **Barbecue Grill and Lounge Restaurant** is only available during the summer months.
- The **Jardín Restaurant** is also used as a private venue for company meals for up to 60 guests.



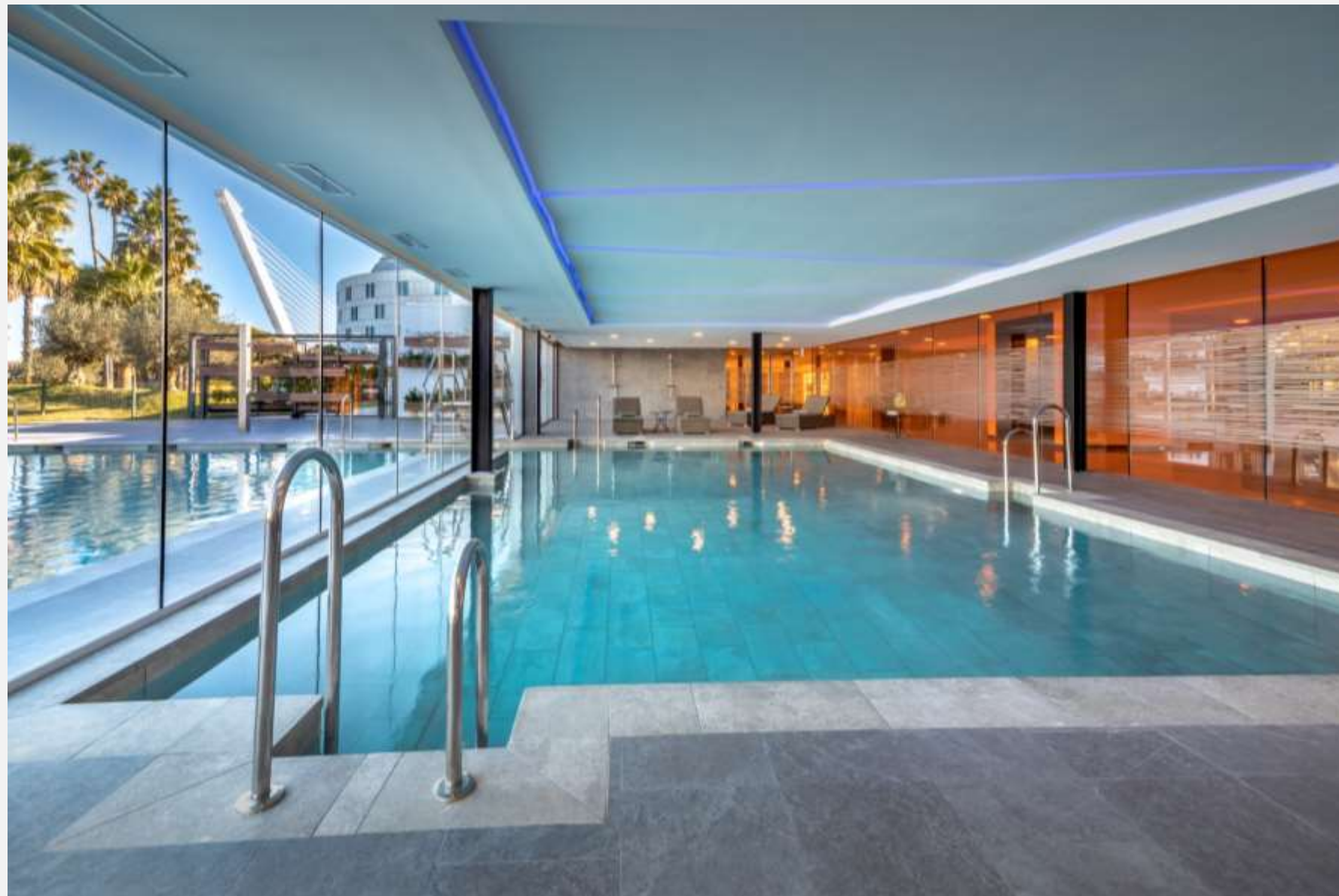


# Facilities

---

## Pool area:

- A semi-covered, temperature-controlled swimming pool with a solarium, open all year round
- An outdoor swimming pool with hammocks, open during the summer
- Children's pool



**Barceló** Sevilla Renacimiento

Live up to **more**



# Facilities

The hotel offers a **Fitness Room** with:

- Gymnasium
- Sauna



**Barceló** Sevilla Renacimiento

Live up to **more**



# Barceló

HOTELS & RESORTS